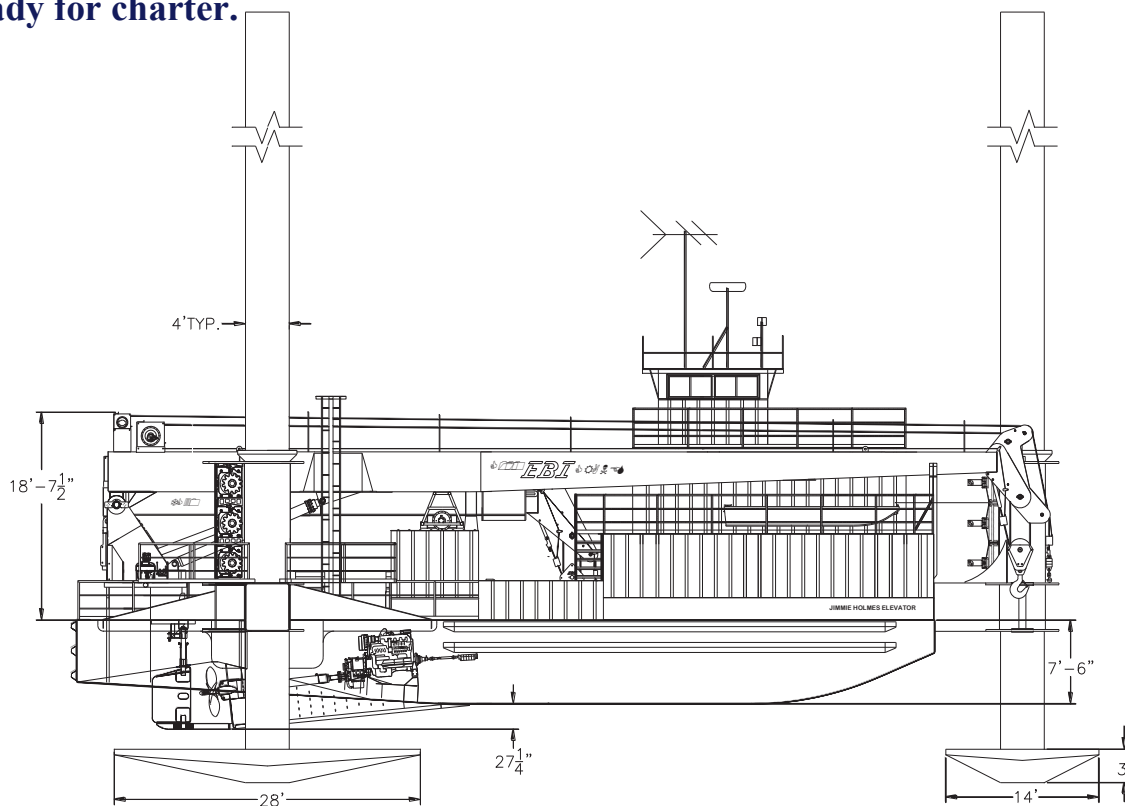


# EBI LIFTBOATS

## 45' Wide X 78'-6" Long Hull

One of several configurations of elevating boats owned and operated by *EBI*, this boat is designed to facilitate general requirements of oil field work including, but not limited to, platform construction and maintenance, flow line construction, well maintenance, field production maintenance, seismic drilling and recording, surveying, and equipment movement and lifting. This boat, and similar ones in this category, is USCG inspected and certified. Subject to availability, all boats are ready for charter.



EQUIPMENT					NAVIGATION EQUIPMENT				
50 ton crane w/80 ft. boom load line and fast line				1	VHF Radio	2	Radar	1	
25 ton telescoping crane w/40 ft. to 70 ft. boom load line and fast line				1	Compass	1	Loran	1	
Crane load rated				10 ft. Radius	Fathometer	1			
3406B Caterpillar w/Twin Disc MG514C (5:1 ratio) reverse gears				2	Company Radio and/or Cellular Telephone can be installed.				
SPEEDS & CAPACITIES						MAXIMUMS & MINIMUMS			
Traveling speed	8 knots	Elevating speed-low	8 ft./min.	Open deck area	2214 sq. ft.	Maximum water depth	120 ft.		
						Minimum water depth	6 ft.		
Fuel capacity	6000 gallons	Elevating speed-med	16 ft./min.			Maximum wave depth	6 ft.		
Water capacity	6000 gallons	Elevating speed-high	24 ft./min.						

EBI PRODUCTS AND SPECIFICATIONS ARE SUBJECT TO CHANGE WITHOUT NOTICE OR OBLIGATIONS.

### ELEVATING BOATS LLC

*EBI* Liftboats, LLC. - 124 Finish Line Lane - Houma, LA 70360

Phone: (985) 868-9655 Fax: (985) 868-9656

Email: [postmaster@ebi-inc.com](mailto:postmaster@ebi-inc.com)

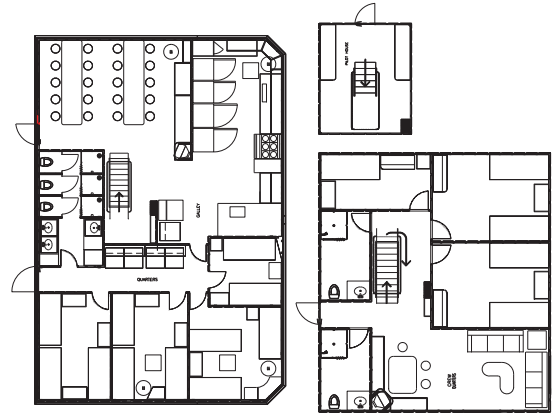
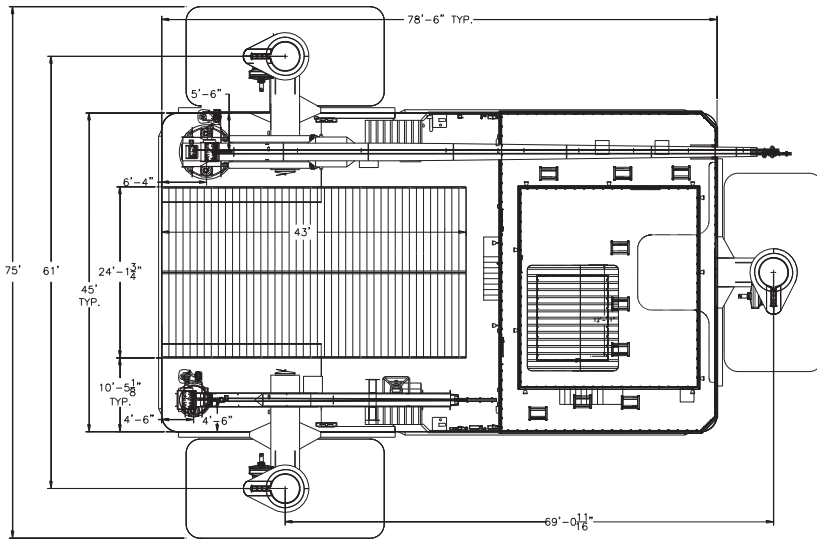


Website: [www.ebi-inc.com](http://www.ebi-inc.com)

06REV081010

# 45' Wide X 78'-6" Long Elevating Boat

## Cabin and Deck Layout



### SPECIFICATIONS

**200,000 lb. Deckload Capacity / Cabin Located on Bow / 2 Cranes**

<b><i>DIMENSIONS:</i></b>		<b><i>PADS:</i></b>		<b><i>CAPACITIES:</i></b>	
Length overall	93 ft.-6 in.	Length overall	28 feet	Fuel	6000 gallons
Length (hull)	78 ft.-6 in.	Width overall	14 feet	Potable water	6000 gallons
Beam overall	75 ft.	Depth overall	3 feet	Hydraulic Oil	500 gallons
Beam (hull)	45 ft.	<b><i>ELEVATING:</i></b>		<b><i>LIVING QUARTERS:</i></b>	
Depth	7 1/2 ft.	Maximum leg extension, bottom of hull to bottom of pad	(B) Feet	Bunks for boat crew	6
Design Draft (loaded)	6 ft.	Maximum working water depth	(C) feet	Bunks for work crew	(F)
Lightship Draft	5 ft.	Recommended air gap allowed	10 feet	Heat & A/C	Roof Mount
Clear Deck Load Area	2214 sq. ft.	Maximum sea conditions	6 feet	Galley: Refrigerator	2
Boarded Deck Load Area	1032 sq. ft.	Maximum height of deck above mud line	130 ft.	Freezer	2
<b><i>HULL CHARACTERISTICS:</i></b>		<b><i>PROPULSIONS:</i></b>		Range	2
Gross Tonnage	Under 200	Main engines (twin screw)	(D)	Seating	20
Maximum Deck Cargo	200,000 lbs.	Rated horsepower per engine	(E)	Rec. Room Seats	10
Raked Bow		Propellers (54" dia.)	2	Head (s) /Shower (s)	5
Raked Stern w/tunnels		Twin Disc Reduction gears	MG514C	Laundry: Washer	2
<b><i>LEGS:</i></b>		Speed underway(approximately)	8 knots	Dryer	2
Number	3	<b><i>GENERATORS:</i></b>		Galley is equipped to cater	Yes
Length overall (including pad)	(A) feet	Number	2	<b><i>CRANE CAPACITIES:</i></b>	
Diameter	48 inches	Engine (Diesel)	Cummins	Number	2
Material-API 5L0-X52	.75 inches	Electric Power	100KW	Boom Length	(G)
Single Gear Rack					

**Quarters and galley have air conditioning and heating.**

#### **SCHEDULE OF ELEVATING BOATS THIS SIZE IN OUR FLEET\***

NAME	(A)	(B)	(C)	(D)	(E)	(F)	(G)
GARY CHIASSON ELEVATOR	150	125	120	3406B Caterpillar	270	26	50 ton w/80 ft. boom & 25 ton telescoping w/40 ft. 70 ft. boom
JIMMIE HOLMES ELEVATOR	150	125	120	3406B Caterpillar	270	26	50 ton w/80 ft. boom & 25 ton telescoping w/40 ft. 70 ft. boom
WALTER CURE ELEVATOR	150	125	120	3406B Caterpillar	270	26	50 ton w/80 ft. boom & 30 ton telescoping w/56 ft. 100 ft. boom

\*REFER TO EBI GENERAL LIFTBOAT BROCHURE FOR ADDITIONAL SCHEDULE AND SPECIFICATIONS OF ELEVATING BOATS.

