

EBI CRANES

MODEL LC250 LATTICE BOOM CRANES

CONTACT DEALER FOR ADDITIONAL PLATFORM CONFIGURATIONS.

ELEVATING BOATS LLC
Corporate/EBI Liftboats, LLC. - 124 Finish Line Lane - Houma, LA 70360
Phone: (985) 868-9655 Fax: (985) 868-9656

EBI Cranes, LLC. - 900 St. Bernard Pkwy. - Braithwaite, LA 70040
Phone: (504) 682-5245 Fax: (504) 682-5296

EBI Machining, LLC. - 40495 West I-55 Service Road - Ponchatoula, LA 70454
Phone: (985) 386-2053 Fax: (985) 386-2084

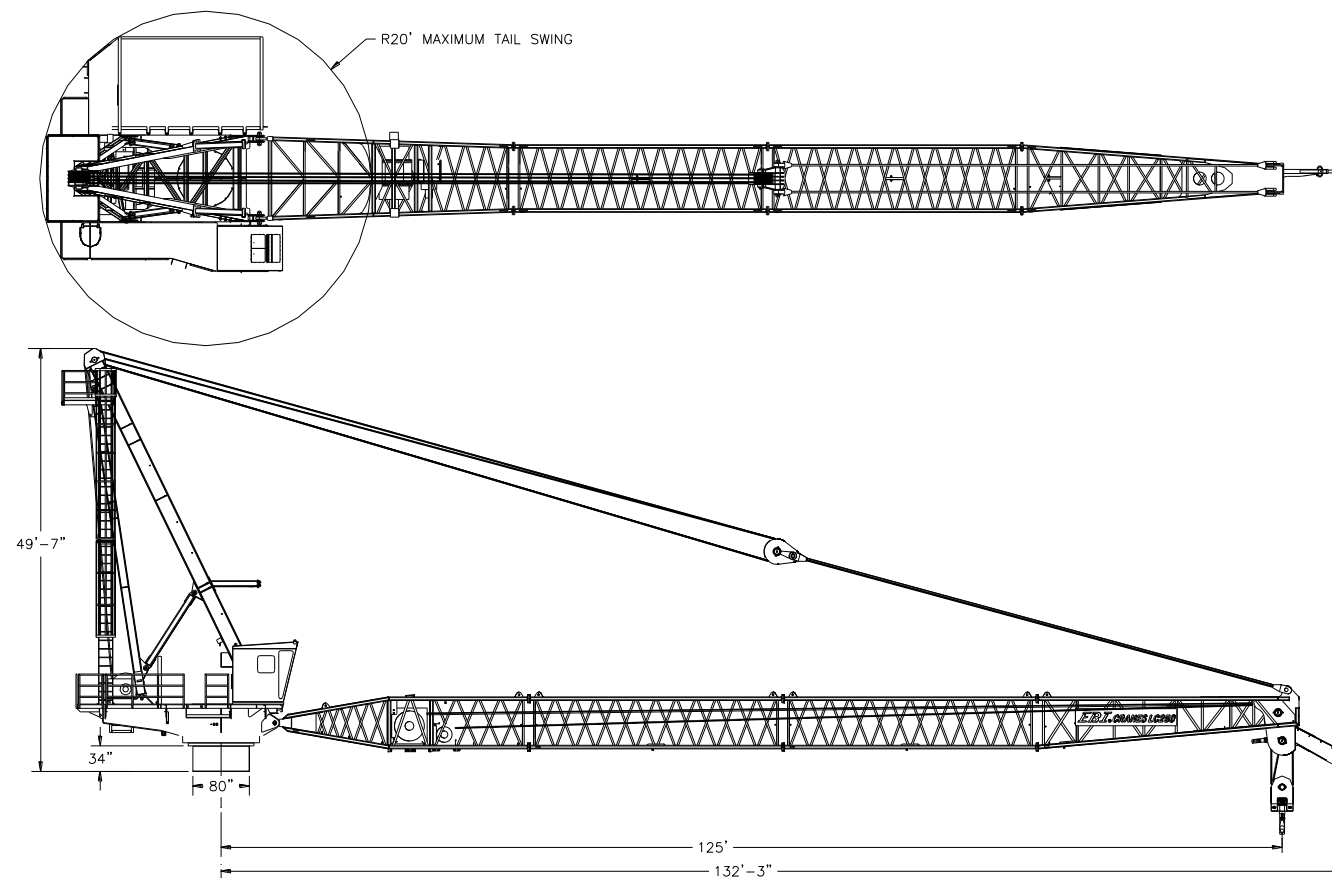
Email: postmaster@ebi-inc.com Website: www.ebi-inc.com



00REV00000

EBI CRANES

MODEL LC250 LATTICE BOOM CRANES



STANDARD EQUIPMENT:

EBI CRANES ARE LICENSED MONOGRAM CRANES UNDER API-2C SPECIFICATIONS.
EBI CRANES MEET OSHA REQUIREMENTS.
PLANETARY SWING MECHANISM WITH ADJUSTABLE MOUNT, HIGH TORQUE MOTOR AND AUTOMATIC SPRING APPLIED BRAKES.
FOUR PORT HYDRAULIC SWIVEL FOR CONTINUOUS ROTATION.
MANWAY WITH BOLTED COVER.
LOAD LINE WINCH: 2 SPEED MOTOR.
ANTI-FRICTION BEARINGS IN THE SHEAVES.
FIBER GLIDE BUSHINGS ON ALL PIVOTING POINTS.
LOAD TEST AT TWICE API OFFBOARD LOAD BEFORE SHIPPING.

EBI PRODUCTS AND SPECIFICATIONS ARE SUBJECT TO CHANGE WITHOUT NOTICE OR OBLIGATIONS.

OPTIONAL EQUIPMENT:

EBI CRANES TO MEET ABS AND USCG REQUIREMENTS.
CRANE CONTROL LOCATIONS:
-PEDESTAL MOUNTED WALKAROUND
-CAB MOUNTED JOY STICK
-VARIOUS PLATFORM CONFIGURATIONS
-REMOTELY LOCATED
SOLAR/BATTERY POWERED BOOM BEACONS.
POWER UNITS CAN BE CRANE MOUNTED OR REMOTELY LOCATED.
POWER UNITS: ELECTRIC MOTOR, AIR MOTOR OR DIESEL ENGINE (DETROIT DIESEL, CUMMINS, CATERPILLAR, DEUTZ AIR COOLED, ETC.).
DIESEL ENGINE STARTER SYSTEMS: ELECTRIC, AIR OR HYDRAULIC.
AIR/HYDRAULIC OIL HEAT EXCHANGER.
17-4 HH1150 STAINLESS STEEL, HEAT TREATED PINS.
FAST LINE WINCH DESIGNED FOR PERSONNEL HANDLING. WINCH CAPACITY IS 5000 LB. LINE PULL. (1000 LB. FOR PERSONNEL)
ANTI-TWO BLOCK SYSTEM.
EMERGENCY LOAD LOWERING SYSTEM.

EBI Cranes, LLC.



900 St. Bernard Pkwy. Braithwaite, LA 70040
Phone: (504) 682-5245 Fax (985) 386-2084
Email: cranes@ebi-inc.com Website: www.ebi-inc.com

00REV00000



MODEL LC250 LATTICE BOOM CRANES
(U.S. CUSTOMARY UNITS)

MODEL LC250-100 API LOAD CHART								BASIC CRANE WEIGHT: 165,217 LBS.
REACH (FT.)	BOOM ANGLE (DEG.)	OFFBOARD LOAD (LBS.)	ONBOARD LOAD (LBS.)	REACH (FT.)	BOOM ANGLE (DEG.)	OFFBOARD LOAD (LBS.)	ONBOARD LOAD (LBS.)	API PEDESTAL REACTIONS (REACTIONS @ 3 X OFFBOARD RATED LOAD) (OTM = OVERTURNING MOMENT)
18	84.0	166,667	250,000	65	52.5	66,000	99,000	MAXIMUM OTM = 15,494,537 FT. LBS. CORRESPONDING AXIAL FORCE = 252,420 LBS. MAXIMUM AXIAL FORCE = 654,017 LBS. CORRESPONDING OTM = 9,227,068 FT. LBS.
25	79.8	151,962	227,943	70	48.5	61,900	92,850	
30	76.5	142,962	214,443	75	44.0	55,000	82,500	
35	73.5	133,051	199,577	80	39.5	52,100	78,150	
40	70.3	114,728	172,092	85	34.0	48,400	72,600	
45	67.0	100,491	150,737	90	28.0	44,800	67,200	
50	63.5	89,075	133,612	95	20.0	40,200	60,300	
55	60.0	79,751	119,626	100	0.0	36,250	54,375	
60	56.5	71,965	107,947					

MODEL LC250-120 API LOAD CHART								BASIC CRANE WEIGHT: 169,017 LBS.
REACH (FT.)	BOOM ANGLE (DEG.)	OFFBOARD LOAD (LBS.)	ONBOARD LOAD (LBS.)	REACH (FT.)	BOOM ANGLE (DEG.)	OFFBOARD LOAD (LBS.)	ONBOARD LOAD (LBS.)	API PEDESTAL REACTIONS (REACTIONS @ 3 X OFFBOARD RATED LOAD) (OTM = OVERTURNING MOMENT)
20	84.3	166,667	250,000	75	55.6	54,842	82,263	MAXIMUM OTM = 15,520,840 FT. LBS. CORRESPONDING AXIAL FORCE = 263,620 LBS. MAXIMUM AXIAL FORCE = 676,217 LBS. CORRESPONDING OTM = 10,946,280 FT. LBS.
25	81.9	151,962	227,943	80	52.6	50,566	75,849	
30	79.5	142,962	214,443	85	49.5	46,799	70,198	
35	77.0	133,051	199,577	90	46.2	43,441	65,162	
40	74.5	114,728	172,092	95	42.7	40,436	60,654	
45	72.0	100,491	150,737	100	38.9	37,723	56,585	
50	69.4	89,075	133,612	105	34.8	35,275	52,912	
55	66.8	79,751	119,626	110	30.2	33,046	49,569	
60	64.1	71,965	107,947	115	24.8	31,007	46,511	
65	61.4	65,396	98,094	120	17.9	29,134	43,701	
70	58.5	59,729	89,594	125	0.0	27,363	41,045	

IN ACCORDANCE WITH API-2C, VALUES SHOWN ARE ACTUAL HOOK LOAD (WEIGHT OF BLOCK AND HOOK EXCLUDED).
LOAD LINE BLOCK WEIGHT IS 2000 LBS.
LOAD LINE (6 PART LINE): 1-1/2" DYFORM 18; 250,000 LB. BREAKING STRENGTH; 50,000 LB. WORKING STRENGTH.
FAST LINE BLOCK WEIGHT IS 400 LBS.
FAST LINE (1 PART LINE): 1" 19X7 EIPS IWRC; 84,400 LB. BREAKING STRENGTH; 16,880 LB. WORKING STRENGTH.
ONBOARD LOAD = 1.5 X OFFBOARD LOAD.
PEDESTAL REACTIONS ARE BASED ON THREE TIMES THE OFFBOARD LOAD PLUS DEAD LOAD.

LOAD CHARTS FOR VARIABLE BOOM LENGTHS AVAILABLE UPON REQUEST.



MODEL LC250 LATTICE BOOM CRANES
(INTERNATIONAL METRIC UNITS)

MODEL LC250-100 API LOAD CHART (30.5 METERS RETRACTED)								BASIC CRANE WEIGHT: 74,941 KGS.
REACH (METERS)	BOOM ANGLE (DEG.)	OFFBOARD LOAD (KGS.)	ONBOARD LOAD (KGS.)	REACH (METERS)	BOOM ANGLE (DEG.)	OFFBOARD LOAD (KGS.)	ONBOARD LOAD (KGS.)	API PEDESTAL REACTIONS (REACTIONS @ 3 X OFFBOARD RATED LOAD) (OTM = OVERTURNING MOMENT)
5.5	84.0	75,620	113,430	19.8	52.5	29,946	44,918	MAXIMUM OTM = 2142 TON METERS CORRESPONDING AXIAL FORCE = 114,528 KGS. MAXIMUM AXIAL FORCE = 296,741 KGS. CORRESPONDING OTM = 1276 TON METERS
7.6	79.8	68,948	103,422	21.3	48.5	28,085	42,128	
9.1	76.5	64,865	97,297	22.9	44.0	24,955	37,432	
10.7	73.5	60,368	90,552	24.4	39.5	23,639	35,458	
12.2	70.3	52,054	78,082	25.9	34.0	21,960	32,940	
13.7	67.0	45,595	68,392	27.4	28.0	20,327	30,490	
15.2	63.5	40,415	60,622	29.0	20.0	18,240	27,359	
16.8	60.0	36,185	54,277	30.5	0.0	16,447	24,671	
18.3	56.5	32,652	48,978					

MODEL LC250-120 API LOAD CHART (36. 6 METERS RETRACTED)								BASIC CRANE WEIGHT: 76,665 KGS.
REACH (METERS)	BOOM ANGLE (DEG.)	OFFBOARD LOAD (KGS.)	ONBOARD LOAD (KGS.)	REACH (METERS)	BOOM ANGLE (DEG.)	OFFBOARD LOAD (KGS.)	ONBOARD LOAD (KGS.)	API PEDESTAL REACTIONS (REACTIONS @ 3 X OFFBOARD RATED LOAD) (OTM = OVERTURNING MOMENT)
6.1	84.3	75,620	113,430	22.9	55.6	24,883	37,324	MAXIMUM OTM = 2146 TON METERS CORRESPONDING AXIAL FORCE = 119,610 KGS. MAXIMUM AXIAL FORCE = 306,814 KGS. CORRESPONDING OTM = 1513 TON METERS
7.6	81.9	68,948	103,422	24.4	52.6	24,943	34,414	
9.0	79.5	64,865	97,297	25.9	49.5	21,234	31,850	
10.7	77.0	60,368	90,552	27.4	46.2	19,710	29,565	
12.2	74.5	52,054	78,082	29.0	42.7	18,347	27,520	
13.7	72.0	45,595	68,392	30.5	38.9	17,116	25,674	
15.2	69.4	40,415	60,622	32.0	34.8	16,005	24,007	
16.8	66.8	36,185	54,277	33.5	30.2	14,994	22,491	
18.3	64.1	32,652	48,978	35.1	24.8	14,069	21,103	
19.8	61.4	29,671	44,507	36.6	17.9	13,219	19,828	
21.3	58.5	27,100	40,651	38.1	0.0	12,415	18,623	

IN ACCORDANCE WITH API-2C, VALUES SHOWN ARE ACTUAL HOOK LOAD (WEIGHT OF BLOCK AND HOOK EXCLUDED).
LOAD LINE BLOCK WEIGHT IS 907 KGS.
LOAD LINE (10 PART LINE): 1-1/2" DYFORM 18; 113,430 KGS. BREAKING STRENGTH; 22,686 KGS. WORKING STRENGTH.
FAST LINE BLOCK WEIGHT IS 181 KGS.
FAST LINE (1 PART LINE): 1" 19X7 EIPS IWRC; 38,294 KGS. BREAKING STRENGTH; 7,659 KGS. WORKING STRENGTH.
ONBOARD LOAD = 1.5 X OFFBOARD LOAD.
PEDESTAL REACTIONS ARE BASED ON THREE TIMES THE OFFBOARD LOAD PLUS DEAD LOAD.

LOAD CHARTS FOR VARIABLE BOOM LENGTHS AVAILABLE UPON REQUEST.